

Worksman Heavy-Duty Tandem Bicycle Owner's Manual and Parts List

Worksman Trading Corporation . 94-15 100th Street . Ozone Park, NY 11416 . (718) 322-2000

www.worksmancycles.com

Parts list: Tandem Bike

Model: T, T3CB, T7CB

Worksman Heavy-Duty Bicycles - The Strongest Bikes in the World!



Congratulations! You have purchased an American-made Worksman bicycle. Worksman Bicycles are considered the most durable bicycles available. Before assembling and riding, make certain to read this manual and any other literature provided thoroughly. Always follow the rules of safe riding. Always keep your Worksman in tip-top shape by replacing worn parts as needed with genuine Worksman Cycles parts. (Do not use generic bicycle parts.) With simple maintenance, your Worksman will perform reliably day after day, year after year. Your bicycle has been hand-made in the USA by our American craftspeople. Our reputation rides along with you, so your ultimate satisfaction is our goal.

This manual is intended as an assembly and maintenance guideline for a professional and qualified bicycle mechanic. Failure to have this cycle professionally assembled could result in injury or death.

Worksman Tandem Bicycle Parts List

(Subject to change without notice as we are always seeking ways to improve our products.)

Frames (Specify color of frames and forks when ordering.)

<u>Part #</u>	<u>Description</u>
3300	Tandem Frame (1-Speed) with cups . specify color

Pedals, Cranks and Parts

<u>Part #</u>	<u>Description</u>
1267K	Crank Assembly for Rear (Includes Crank, Double sprocket and Crank Parts)
1380AA	Double Rear Sprocket (40/48T)
1267J	Crank Assembly for Front (Includes Crank, 40T Sprocket and Crank parts)
1380EA	Front Sprocket (40T)
1265	Crank Parts Set (1 set of each 1266, 1268, 1269, 1271, 1272, 1273, 1274)
1266	Crank Bearings (pair)
1268	Crank Ball Cups (pair)
1269	Washer - Inside Stationary
1271	Key Washer
1272	Adjusting Cone
1273	Stationary Cone
1274	Locknut
1275	Crank (6-1/2")
7217	Pedals (1/2"+Reflectorized)

Fork, Headset and Handlebars

<u>Part #</u>	<u>Description</u>
60HD	Fork (Black)
48	Head Cups for Frame (pair)
49	Headset Bearings (pair)
50A	Headset (48, 49, 52, 53, 54)
51	Fork Bottom Cone (Included with fork)
52	Top Adjusting Cone
53	Fork Key Washer
54	Fork Locknut
55F	Handlebar (Junior Highrise, Front and Rear)
55A	Stem for Front Handlebar
55GA	Stem for Rear Handlebar
55B	Grips for Handlebar (Pair)

Fenders and Braces

<u>Part #</u>	<u>Description</u>	<u>Part #</u>	<u>Description</u>
4901	Rear Fender 26+	4907	Nut, Bolt, Washer for 83A Brace
82	Front Fender	4907A	Nut, Bolt, Washer to Attach L-Bracket to Fork
82K	Front Fender Small Parts	83A	Braces for 4901 & 82
95	Washer+Bracket for Front Fender		

Saddles and Seatpost

<u>Part #</u>	<u>Description</u>	<u>Part #</u>	<u>Description</u>
4912V	Saddle (Front and Rear)	6911V	Extra-Wide Saddle (Fits rear only)
4908C	Seatpost for Front	4911C	Seatpost Frame Clamp (Seatpost to frame)
4908D	Seatpost for Rear	7913	Saddle Clamp (Seat to Seatpost, 7/8+)

Wheels, Tires, Rims, Rear Hubs and Parts (Alloy wheels also include stainless steel spokes and nipples.)

<u>Part #</u>	<u>Description</u>
77A	Front Drum Brake Wheel without Tire
77CAR	Alloy Rim / Stainless Spoke Front Drum Brake Wheel without Tire
4136SA	Rear Coaster Brake Wheel without Tire
4136ASS	Alloy Rim / Stainless Spoke Rear Coaster Brake Wheel without Tire
SMX263CB	Rear 3 Speed Coaster Brake Wheel without Tire
SMX267CB	Rear 7 Speed Coaster Brake Wheel without Tire
SMX263CBAL	Alloy Rim / Stainless Spoke Rear 3 Speed Coaster Brake Wheel without Tire
SMX267CBAR	Alloy Rim / Stainless Spoke Rear 7 Speed Coaster Brake Wheel without Tire
4922A	Tire 26x2.125 WTC 50 PS1 - Blackwall
4922AWSW	Tire 26x2.125 Whitewall Knobby
4923A	Tube 26x2.125
6023A	26x2.125 Puncture Resistant Tube
1014B	Spoke and Nipple 11g (.120) 9 13/16+Front
1014A	Spoke and Nipple 11g (.120) 10-9/16+Rear
301	Coaster Brake Complete (Hub ONLY!)
SS721	Coaster Brake Internal Parts Kit (1 speed ONLY)
401	3 Speed Coaster Brake . Complete (Hub ONLY!)
1016	26x2.125+Clincher Rim - Chrome (Rim ONLY!)
1017	Rimstrip
1018	Valve Cap
SS12N-3	Trigger and Cable for 3 Speed Coaster Brake

Front Drum Brake Parts (Old style hubs have loose bearings. New style hub has pressed bearings.)

<u>Part #</u>	<u>Description</u>	<u>Part #</u>	<u>Description</u>
<i>OLD STYLE</i>			
L900	Drum Brake Hub	L709	Front Axle Set for Drum Brake
F817	Wheel Bearings - Loose 11 balls	L725	Drum Brake Plate Kit (Internal parts kit)
<i>NEW STYLE</i>			
L500-F	Hub - NEW STYLE w/ pressed bearing	L509	Axle - NEW STYLE for pressed bearing
L517	Pressed Bearing - NEW STYLE	L525	Drum Brake Plate Kit (NEW STYLE)
F719	Drum Brake Cable w/ F769 and F770	F816	Axle Washer
F769	Anchor Bolt Assembly for F719 Cable	F770	Adjusting Barrel for F719 Cable
L752R	Brake Lever (Right) w/ Parking Lock	160B	Fork Retention Clip (each)
L752L	Brake Lever (Left) w/ Parking Lock	L815	Outside Axle Nut (each)

Note: Repair parts are no longer available for steel drum brakes

Chains, Chainguards and Kickstands

Part #	Description	Part #	Description
4910B	Chainguard . Extra Long (Specify Color)	4914N	Front Chain (131)
4914QA	Rear Chain (113)	7229A	Kickstand
4915	Chain Adjuster	4916	Chain Idler Sprocket
4914M	Chain Connecting Link		

Safety and Comfort Accessories

Part #	Description	Part #	Description
3979	Ding Dong Chime Bell	303	Squeeze Bulb Horn
3973	Mega-Horn (battery operated)	201	Cable and Lock set
4963	Rear View Mirror	5032	Reflector Kit (Does not include 5031)
3978	Safety Flag on Pole	P19	Bicycle Helmet
101710	Flashing Strobe Light (clear lens)	101714	Flashing Strobe Light (red lens)
7217-41197	Pedals with Velcro Foot Straps (pair)	3975	Generator Light Set
1006	Air Foot Pump	1000	Spoke Wrench
2000	Chain Rivet Remover Tool	1265TW	Crank Cone Wrench
1001	Pedal Wrench	7917A	Backrest w/ Mounting Hardware
6001	Patch Kit (50)	3976	Battery Operated Headlight
7217GS12	%Glow-speck+Flashing Pedals	202	Frame-Mounted Hand Pump

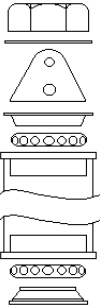
ASSEMBLY INSTRUCTIONS FOR WORKSMAN HEAVY-DUTY BICYCLES:

Please read this manual carefully prior to performing the simple finishing assembly and prior to riding. We recommend that a qualified bicycle mechanic assemble this cycle. Carefully remove the bicycle from the carton. You will notice the bicycle is mostly pre-assembled at the factory.

TO ATTACH FRONT FORK/WHEEL ASSEMBLY TO THE FRAME:

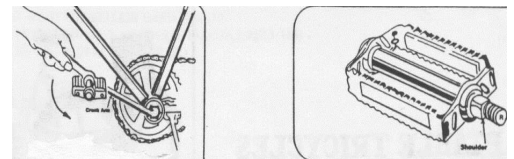
Headset:

- Grease headset cups (48) with Rustolene 200 or equal. Bearings (49) are pre-greased at the factory, but it is wise to add lubrication before assembly.
- Place one headset bearing (49) onto fork steerer tube with balls facing up. Slide steerer tube into frame.
- Place the other bearing on top of fork tube with balls facing down towards the cup (#48), which is already pressed onto the frame.
- Install top-adjusting cone (52) onto treaded fork steering tube. Hand-tighten, making sure bearings do not bind. Turn back ¼ turn.
- Install fork key washer (53) and reflector bracket on top of the adjusting cone with tip of washer in slot on steering tube.
- Install head lock nut (54) and securely tighten. Make sure that the fork rotates freely without being loose. Excess play or resistance must be adjusted. Failure to adjust properly can lead to improper steering response.
- Install handlebar stem (55A) into the fork steering tube with the handlebar clamp facing forward. The stem must be inserted far enough to cover the minimum insertion line. Tighten the stem bolt slightly at this point. Loosen the handlebar clamp nut and slide the handlebar through the clamp, centering the knurled center section of the handlebar into the clamp.
- Position the handlebar to the desired angle and tighten clamp securely. Recommended torque is 300 IN. LBS. Adjust the handlebar rotation so that it is straight with the front wheel. Tighten stem bolt securely. Recommended torque 240 IN. LBS. Be sure not to over tighten, as damage to the parts may occur causing steering failure.
- Attach brake lever to handlebar. Make sure brake cable is not tangled in any way.
- Push handlebar grips over ends of handlebar. Put a very small amount of dish detergent on bar if very tight to help them slide on.



INSTALLING PEDALS AND KICKSTAND:

- Install kickstand behind rear cranks in front of rear wheel.
- Pedals are marked on the shaft with either an "L" or "R" denoting left or right. The "R" pedal fits on the right (sprocket side) of the crank arm. Tighten clockwise. The "L" pedal fits on the left side of the crank arm. **Tighten counter-clockwise (left-hand thread).** Securely tighten. Recommended torque 275 IN. LBS. **CAUTION: Tightening in the wrong direction will damage the crank threads.**



INSTALLING REAR STEM:

- Slide rear stem over front seatpost.
- Adjust stem to desired height and tighten hex bolts.
- Slide rear handlebar through stem.
- Center handlebar in stem, set to desired angle, and tighten stem bolt.
- Install handlebar grips, as instructed for front handlebar.

SEAT ADJUSTMENTS:

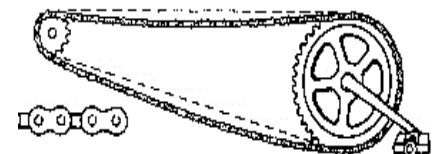
Adjust the seat height to your desired level by loosening the seat clamp nut at the top of the frame's seat tube. Re-tighten at desired height. Make sure a minimum of 3 1/2" of the post remains in the frame tube, and that minimum insertion line is covered. Never adjust post above this level. Adjust angle of seat with nose raised slightly. Tighten seat clamp securely. (240 IN. LBS.)

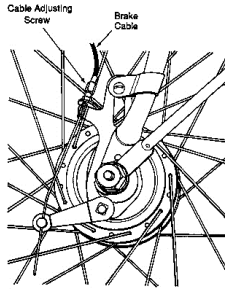
MAINTENANCE TIPS:

Always inspect your Worksmen Cycle to ensure that all nuts, bolts, screws and hardware are tight and that no parts are worn or damaged. Do not attempt to straighten bent forks or frames.

Chain:

Lubricate chain once a month or as needed with light oil. Replace sprockets when teeth become worn, bent or broken. Keep chain adjusted so there is no more than 3/8" slack. Note that we make the chains tight at the factory, as we do know they will stretch during the break-in period. Lubricate crank parts every six months. Replace pedals when the surface is worn or if axle becomes tight or frozen.



**Drum Brake:**

Some Worksmen bicycles are equipped with a front drum brake. It is engaged by squeezing the hand lever on the handlebar. To use ~~park~~ feature, when cycle is completely stopped, squeeze hand lever and push in parking plunger button on lever. To disengage, simply squeeze lever until parking plunger button releases. Drum brakes are pre-adjusted at the factory. Readjust the cable tension as necessary using the adjusting barrel so that wheel spins freely and stops when brake is applied. Always replace worn brake cables and damaged hand levers.

Coaster Brake (if applicable):

Foot activated coaster brakes are easy to use and reliable. To activate this internal brake, reverse the pedaling motion until the brake engages. To avoid skidding and maintain control, apply care when braking. This is especially true on wet surfaces. Apply brakes gently, gradually increasing pressure. Replace coaster brakes when they become worn. Check chain tension regularly. Coaster brake hubs may make a vibrating noise under braking until they are broken in. For multi-speed units, pause pedaling when shifting to help mesh gears. (Let the cycle coast.) Multi-speed hubs make a slight ticking sound.

Tires:

Always check for wear or damage. See tire sidewall for proper level of inflation. Replace worn or cut tires and leaking tubes immediately.

LIMITED WARRANTY:

THIS CYCLE IS WARRANTIED AGAINST FAULTY PARTS UNDER THE FOLLOWING CONDITIONS: THIS WARRANTY DOES NOT COVER ANY FAILURE DUE TO ACCIDENT, ABUSE, MISUSE, NEGLIGENCE OR AS THE RESULT OF NORMAL WEAR AND TEAR, OR IMPROPER ASSEMBLY. THE ENTIRE FRAME, INCLUDING ALL WELDED JOINTS, IS WARRANTIED TO BE FREE FROM DEFECTS AND MATERIAL FOR ONE YEAR WHILE IN POSSESSION OF THE ORIGINAL PURCHASER. ALL OTHER PARTS ON THIS CYCLE, EXCEPT TIRES AND TUBES, ARE WARRANTIED FOR 90 DAYS FROM THE DATE OF PURCHASE. REPAIR AND REPLACEMENT OF THESE PARTS IS TO BE ACCORDING TO THE WORKSMAN CYCLES PARTS AND SERVICE PROCEDURES AND MUST BE HANDLED DIRECTLY THROUGH THE SOURCE WHERE THE CYCLE WAS PURCHASED. IF UPON EXAMINATION OF THE PARTS IN QUESTION, THE WORKSMAN CYCLE DEALER DETERMINES THAT IT IS DEFECTIVE, EITHER REPAIR OR REPLACEMENT WILL BE MADE AT NO COST EXCEPT THE COST OF TRANSPORTATION AND LABOR CHARGES (IF ANY). UNAUTHORIZED REPAIRS OR REPLACEMENT AUTOMATICALLY VOIDS WARRANTY. PROPER MAINTENANCE IS REQUIRED FOR WARRANTY TO BE VALID. IN THE EVENT THAT IT WAS DETERMINED THAT THE WARRANTY CLAIM IS THE RESULT OF MISUSE, ABUSE, IMPROPER MAINTENANCE OR SIMPLY NOT DEFECTIVE OR BEYOND THE WARRANTY PERIOD, WORKSMAN CYCLES OR THE DEALER WILL ADVISE YOU AS TO THE COST OF REPAIR, REPLACEMENT OR LABOR PRIOR TO PERFORMING ANY WORK OR REPLACING ANY PARTS. IF YOU CHOOSE NOT TO HAVE THE DEALER OR WORKSMAN CYCLES PERFORM THE WORK, THE PARTS WILL BE RETURNED TO YOU AT YOUR EXPENSE OR DISCARDED IF NO REPLY IS RECEIVED WITHIN 2 WEEKS OF NOTIFICATION. THE SOLE RESPONSIBILITY OF THE MANUFACTURER TO THE TERMS OF THIS WARRANTY, IF ANY, SHALL BE THE REPAIR AND/OR REPLACEMENT OF THE PARTS AS INDICATED ABOVE. THE LIABILITY OF THE MANUFACTURER SHALL IN NO EVENT EXCEED THE ORIGINAL PURCHASE PRICE OF THE PRODUCT, AND THE MANUFACTURER SHALL NOT BE RESPONSIBLE FOR ANY CONSEQUENTIAL DAMAGES OF ANY NATURE, INCLUDING, BUT NOT BY WAY OF LIMITATION, DAMAGES FOR PERSONAL INJURY OR PROPERTY. THIS STATEMENT CONSTITUTES THE EXCLUSIVE EXPRESSION OF WARRANTIES BY THE MANUFACTURER AND IS IN LIEU OF ANY OR ALL OTHER WARRANTIES SUCH AS EXPRESSED WARRANTIES, IMPLIED WARRANTIES, INCLUDING BUT NOT LIMITED TO WARRANTIES OF MERCHANTABILITY, AND FITNESS OR PURPOSE, ARE LIMITED IN DURATION FOR ONE YEAR FROM THE DATE OF PURCHASE OF THE FRAME ONLY AND 90 DAYS FOR ALL OTHER PARTS, EXCEPT TIRES AND TUBES WHICH ARE NOT WARRANTIED. WORKSMAN TRADING CORPORATION IS THE MANUFACTURER. MISUSE OF THE CYCLES INCLUDING OFF ROAD RIDING, INSTALLATION OF MOTORS OR POWER ASSISTS, ALTERATIONS, REPAIRS USING PARTS OTHER THAN WORKSMAN CYCLE PARTS VOIDS WARRANTY. WORKSMAN TRADING CORPORATION IS NOT RESPONSIBLE FOR MAINTAINING RECORDS OF SERIAL NUMBERS. VOID WHERE PROHIBITED BY STATE LAW.

RULES FOR SAFE RIDING AND RESPONSIBLE OPERATION: Carefully read this manual before operating the cycle.

- It is the responsibility of the assembler to properly install all parts included and to inspect the cycle prior to riding to insure proper operation.
- Operator is responsible for required maintenance and for observing all traffic regulations in the operating environment. (Stop signs, etc.)
- Keep to the right and in a straight line. Ride in single file. Operate cycle at slow speeds, particularly in high traffic areas.
- Do not ride outdoors at night, and have appropriate signaling device as needed. (We recommend the 3973 Mega Horn.)
- Give pedestrians the Right of Way. Always look around you to understand the riding environment and hazards.
- Do not carry passengers, and check brakes prior to riding. Never ride the cycle if there are known repairs required.
- Slow down when approaching turns or intersections. Use proper hand signals when turning or stopping.
- Recommended safety options include, but are not limited to, an approved helmet, audible warning device, front/rear lights and/or reflectors.
- Do not exceed the recommended weight capacity. (300 lbs., including the rider.) Always secure cargo with appropriate tie down straps.
- Wipe surface of cycle clean and dry when exposed to corrosive substances or environment.
- Operators of cycles should be in good physical condition. Ride at your own risk.
- Wear proper riding attire. Check shoelaces and pant legs prior to riding so they do not become engaged in the chain and sprocket.
- Ride only on smooth, paved surfaces. Do not use off road. Always keep both hands on the handlebars.
- Always replace worn parts with genuine Worksmen Cycle Repair Parts.

Check out these other exciting products from Worksmen Cycles!



The Worksmen Mover Tricycle



The Worksmen Executive Tricycle



The Worksmen Front-Loader STPT

Visit us online at www.worksmancycles.com or call us at 888-3WHEELER!